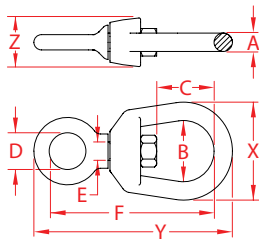


FED. SPEC. CHAIN SWIVEL

316 STAINLESS STEEL



Import



Drop
Forged



Suncor
Exclusive



MIL-
SPEC

ITEM	A	B	C	D	E	F	X (height)	Y (length)	Z (width)	WLL (lb)	WT (lb)	PACKAGING TYPE	EACH (qty)	INNER (qty)	CARTON (qty)	UPC
S0128-FX05*	3/16"	0.75"	0.84"	0.50"	0.25"	2.28"	1.25"	2.65"	0.60"	700	0.11	POLYBAG	1	10	300	791506032632
S0128-FX07	1/4"	0.75"	0.80"	0.63"	0.31"	2.56"	1.25"	3.00"	0.60"	900	0.16	POLYBAG	1	5	200	791506032649
S0128-FX08	5/16"	1.25"	1.17"	0.75"	0.38"	3.37"	2.00"	4.00"	0.88"	1,200	0.41	POLYBAG	1	1	75	791506032656
S0128-FX10	3/8"	1.25"	1.06"	1.00"	0.50"	3.74"	2.00"	4.50"	0.88"	3,400	0.55	POLYBAG	1	1	50	791506032663
S0128-FX13	1/2"	1.50"	1.45"	1.25"	0.63"	4.68"	2.50"	5.68"	0.96"	4,400	1.15	POLYBAG	1	1	50	791506032670
S0128-FX16	5/8"	1.75"	1.73"	1.50"	0.75"	5.71"	3.00"	7.00"	1.42"	6,000	2.15	POLYBAG	1	1	15	791506032687

NOTE:

I/A/W FED. SPECIFICATION RR-C-271F TYPE VII, CLASS 1 (EXCEPT 316 STAINLESS STEEL). MEETS THE REQUIREMENTS OF: MIL-DTL-32655 (*EXCLUDING S0128-FX05). SWIVELS ARE POSITIONING DEVICES AND ARE NOT INTENDED TO ROTATE UNDER LOAD. MARKED WITH SIZE AND WORKING LOAD LIMIT. ALL DIMENSIONS ARE NOMINAL (+/- 3%) AND ARE SUBJECT TO CHANGE WITHOUT NOTICE.